



TRE House

Sample 522-082422-020

Bussin' Berry- Syrup-D9-1000mg

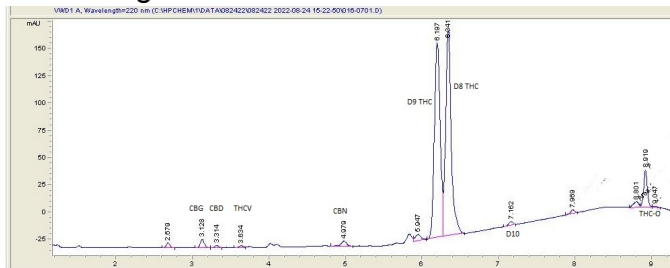
Sample Submitted: 08-24-2022; Report Date: 08-24-2022

Sample Unit Size: 120.00 g

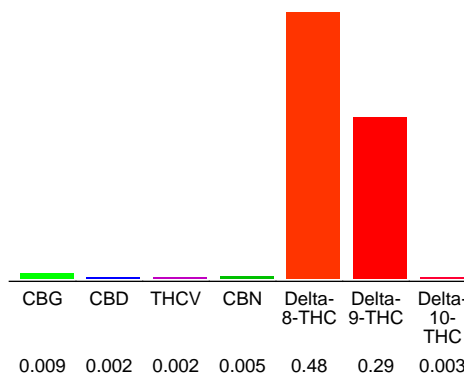
## Bussin' Berry- Syrup-D9-1000mg

Edible

### Chromatogram



### Cannabinoid Profile



### Cannabinoid Profile by HPLC

**0.29%**  
Calculated Delta-9-THC Yield

**0.00%**  
Calculated CBD Yield

**0.79%**  
Total Cannabinoids

Cannabinoid	% wt	mg/unit
CBG	0.009	10.8
CBD	0.002	2.4
THCV	0.002	2.4
CBN	0.005	6.0
Delta-8-THC	0.48	576.0
Delta-9-THC	0.29	348.0
Delta-10-THC	0.003	3.6
<b>Total Cannabinoids</b>	<b>0.79</b>	<b>949.2</b>
<b>Calculated Delta-9-THC Yield</b>	<b>0.29</b>	<b>348.00</b>
<b>Calculated CBD Yield</b>	<b>0.00</b>	<b>2.40</b>

Calculated Maximum Delta-9-THC Yield = Delta-9-THC + 0.877 \* THCA

Calculated Maximum CBD Yield = CBD + 0.877 \* CBDA

**Notes:** THC-0 0.04% (48mg/unit) based on chromatogram; no reference standard is available.

**Marin Analytics, LLC**  
250 Bel Marin Keys Blvd, Suite D4  
Novato, CA 94949

415-936-6477 / sarabiancalana1@gmail.com

*Sara Biancalana*  
**Sara Biancalana**  
Chief Scientist

This sample has been tested by Marin Analytics, LLC using valid testing methodologies and a quality system. Values reported relate only to the sample tested. Marin Analytics, LLC makes no claims as to the efficacy, safety or other risks associated with any detected or non-detected levels of any compounds reported herein. This Certificate shall not be reproduced except in full, without the written approval of Marin Analytics, LLC.